

shanghai
expo2010

二零一零世博会
上海



理想之城，人之城

A CITY OF IDEAL, A CITY OF PEOPLE

主办方 · organizador · organizer

意大利上海世博会筹委会
Comité de Italia EXPO Universal 2010 Shanghai
Commission of Italy World EXPO 2010 Shanghai

占地面积 · área de parcela · site area
≈ 6000 m²

奖项 · premios · awards

一等奖 · primer premio · first prize

GIAMPAOLO IMBRIGHI (建筑师)

(c) Teresa Crescenzi · Antonello de Bonis · Cosimo Dominelli · Francesco Iodice · Giuseppe Iodice · Marcello Silvestre

二等奖 · segundo premio · second prize

STUDIO VALLE PROGETTAZIONI (建筑师事务所)

方案 project: Tommaso Valle · Cesare Valle · Gianluca Valle · Gianluigi Valle · Alfonso Mercurio

Marco Garofalo · Marta Scuncio · Massimiliano Celani (建筑师) · Amedeo ed Andrea Schiattarella Architetti Associati (建筑师事务所)

结构 structures: Studio tecnico Majowiecki

持续性规划 sustainability: Energia e Ambiente

岩土 geotechnic: Studio Di Bartolomeo

三等奖 · tercer premio · third prize

BiCUADRO ARCHITECTS (建筑师事务所)

Francesco Bezzi · Massimiliano Brugia · Valerio Campi (建筑师)

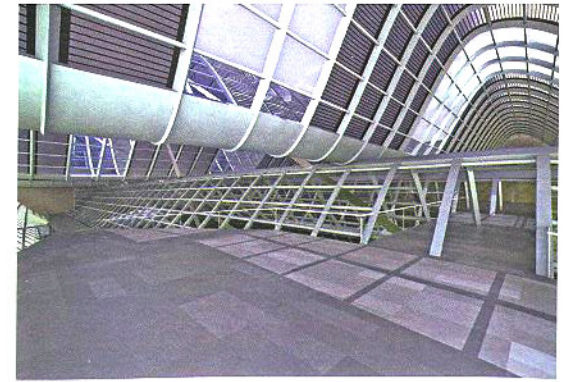
(c) Stefano Farcomeni

结构及机械工程 structures and mechanical engineering: Hydroingea Associated

STUDIO VALLE PROGETTAZIONI (建筑师事务所)

Tommaso Valle · Cesare Valle · Gianluca Valle · Gianluigi Valle (建筑师)

最终入围者 finalista finalist



空间的不确定性

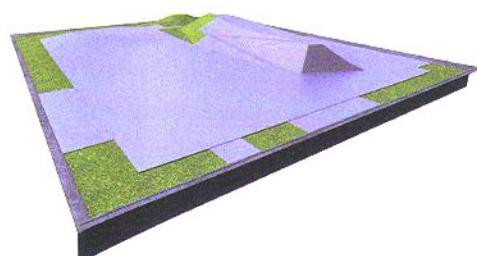
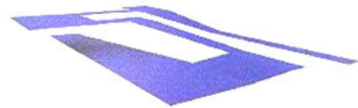
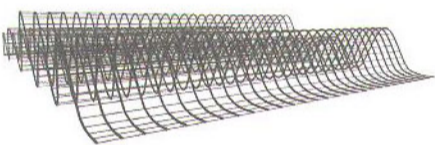
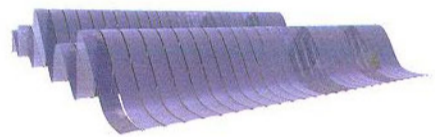
建筑物平面图的几何设计源于谐波和弦，与黄金分割比例极其相似，加上决定选择何种砌石工程的涂层，这些唤起了人们的审美观念——也就是“传统”国家建筑的正式特征。

AMBIGÜEDAD ESPACIAL

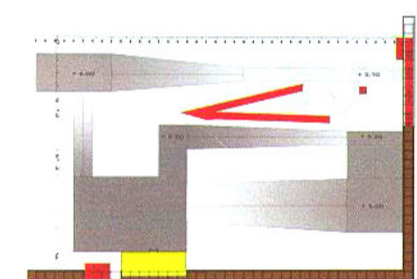
La geometría del plano del edificio proviene de los acordes armónicos similares a las relaciones del número de áureo o de oro, que, conjuntamente con la decisión de optar por un revestimiento de mampostería, evocan las características estéticas - formales de la arquitectura "tradicional" nacional.

SPATIAL AMBIGUITY

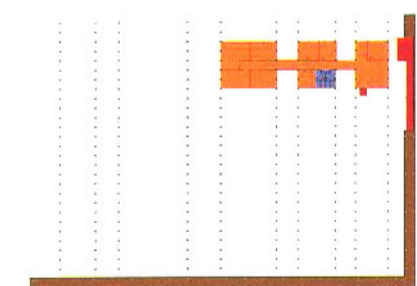
The geometric design of the building plan derives from harmonic chords similar to relations of golden proportions, which, together with the decision to opt for a masonry coating, evokes the aesthetic - formal features of "traditional" national architecture.



平面图 +1.00 NIVEL +1.00 LEVEL +1.00



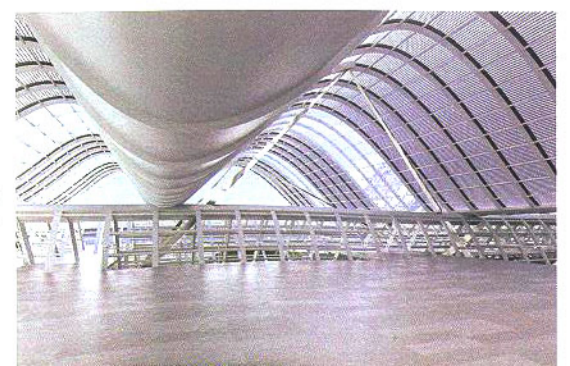
平面图 +8.00 NIVEL +8.00 LEVEL 8.00



平面图 +11.50 NIVEL +11.50 LEVEL 11.50

- 多媒体室 SALA MULTIMEDIA MEDIA ROOM
- 咖啡 CAFETERIA CAFETERIA
- 办公室 OFICINA OFFICE
- 展区 ZONA DE EXPOSICIÓN EXHIBITION AREA
- 专卖店 BOTIQUE BOTIQUE
- 厨房 COCINA KITCHEN
- 洗手间 BAÑO BATHROOM
- 行李 EQUIPAJE LUGGAGE
- 展区斜坡 RAMPAS DE EXPOSICIÓN RAMPS FOR EXHIBITION
- 垂直连接 CONEXIONES VERTICALES VERTICAL CONNECTIONS
- 房间 HABITACIONES ROOMS

组合模型 ESQUEMA COMPOSITIVO COMPOSITION SCHEME



numero doble | double issue



18 euros in SPAIN
22€ in GERMANY and ITALY

MADRID 2010

ZHEJIANG UNIVERSITY PRESS
浙江大学出版社

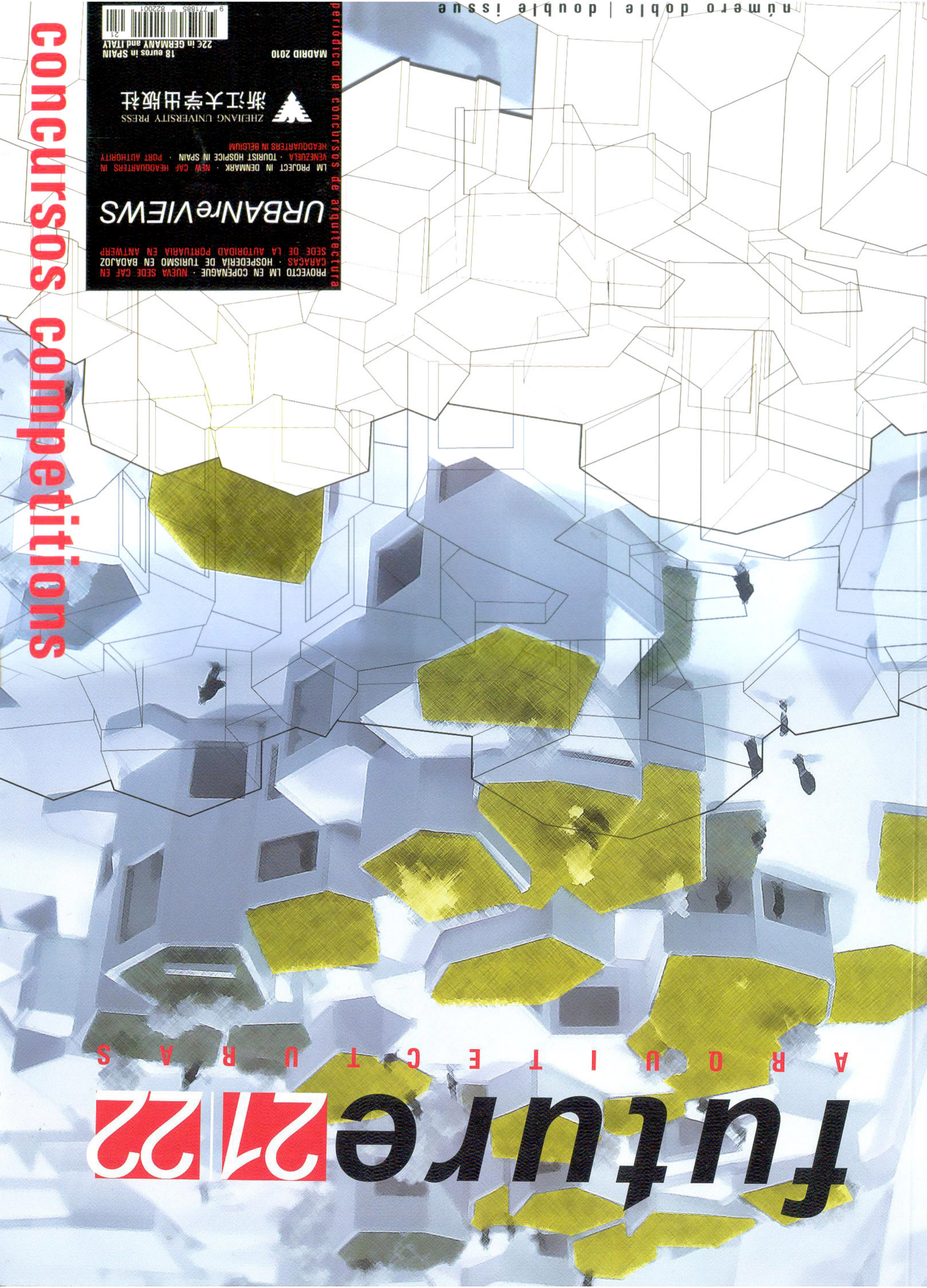


PERIÓDICO DE CONCURSOS DE ARQUITECTURA
LM PROJECT IN DENMARK · NEW CAF HEADQUARTERS IN
VENEZUELA · TOURIST HOSPICE IN SPAIN · PORT AUTHORITY
HEADQUARTERS IN BELGIUM

URBANREVIEWS

PROYECTO LM EN COPENAGUE · NUEVA SEDE CAF EN
CARACAS · HOSPEDERÍA DE TURISMO EN BADAJOS
SEDE DE LA AUTORIDAD PORTUARIA EN ANTWERP

CONCURSOS competitions



A R Q U I T E C T U R A S



future